

COMPANY PROFILE



**lab
partners**
CLINICAL
LABORATORIES



The depth of who we are is defined by the precision and timeliness of our results, the quality of our service and our patient centric approach. We focus on providing seamless patient care as well as the needs of our partners, stakeholders and the community around to ensure sustainability.

Beyond diagnostics

Contents

- 01 Purpose and Values
- 02 Our Service Offering
- 03 Our Quality Promise
- 04 Managing Pathologist Profile

Purpose

To be leaders in the laboratory medicine space, who go beyond delivering differentiated diagnostic expertise that is reliable and affordable.

Values

Excellence

We deliberately embrace diversity and inclusivity in our pursuit of excellence.

Innovation

We are committed to continuously using new cutting edge technologies to develop and upgrade our systems, processes, equipment and human capital to ensure that our service always meets global standards. We always look to be pro-active and consistently offer better services, in the process being responsible for the environment and communities that we operate in.

Respect

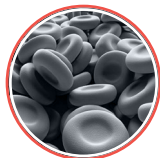
We always treat our patients and staff with respect and empathy. We value relationships and collaborate with all our partners, communities, stakeholders and across teams. In all our professional disciplines, and at all levels, we carry out our duties skilfully, diligently and with integrity.

Our Service Offering

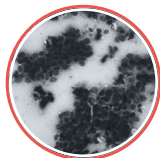
LabPartners Clinical Laboratories is committed to making a real difference to laboratory medicine services in Zimbabwe by providing services & products that improve client diagnosis and prognosis and enhance client experience. We offer the following broad range of services:



Biochemistry



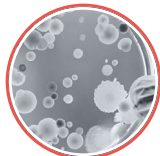
Haematology



Histopathology & Cytology



Molecular Diagnostics



Microbiology



Serology



Environmental Testing And
Infection Control



Occupational Health



Wellness



Clinical Trials



Research



Our Quality Promise

Quality is at the core of what we do and the services we offer. Our comprehensive quality control system ensures that all our internal processes provide results with precision and in a reliable and expedited manner. Our staff have been trained to comply with the highest level of quality through the implementation of global best practices throughout all the laboratory processes.

Compliance To Statutory and Regulatory Requirements

LabPartners complies with statutory and regulatory requirements and all institutions are registered with:

City Health Departments
Medical Laboratory & Clinical
Scientists Council of Zimbabwe
(MLCSCZ)
Medical and Dental Professionals
Council of Zimbabwe (MDPCZ)
Health Professions Authority of
Zimbabwe



Managing Pathologist Profile

Experience and Job Summary

Dr Mberi practiced as medical officer at Chegutu District Hospital before he moved to South Africa. He worked in South Africa for six years during which he specialized as a pathologist and subspecialized in clinical haematology. He spent some time in India and Mexico gaining experiences in practicing advanced haematology in resource limited environments.

When he returned from South Africa, Dr Mberi joined the University of Zimbabwe where he worked as a lecturer and Consultant in the Department of Haematology.

He is currently a Consulting Pathologist, National Blood Services of Zimbabwe (NBSZ), UZ-CRC and held the same position at CIMAS Medical Laboratories before founding Lab Partners.

Qualifications

He holds Bachelor of Medicine and Bachelor of Surgery (MBChB) from the University of Zimbabwe, Masters in Medicine in Haematology (MMed Haem) from the University of the Free State South Africa. He is a Fellow of the Colleges Pathology of South Africa-Haematology (FCPath Haem- SA) and a Fellow of the College of Pathologists of Central Eastern & Southern Africa – Haematology (FCPath Haem – COPESCA). He also holds a Postgraduate diploma in Clinical Haematology and a Certificate in the Sub-specialization in Clinical Haematology from the Colleges of Medicine South Africa. His most recent qualification is a diploma in Bone marrow transplants from Clinica Ruiz Mexico.





**lab
partners**

**CLINICAL
LABORATORIES**

No. 18 East Road, Belgravia
Harare, Zimbabwe

PHONE: +263 867 719 8704 / 71 675 5724

WHATSAPP: +263 78 128 3924

EMAIL: info@labpartners.co.zw

labpartners.co.zw